
WELCOME!

Please Let Us Know Where You Live

Please mark a cross (“X”) on the map where you live

Put one cross for each person here today, so if there are two of you here, put two “X’s”, etc.

If you don’t live within the map boundary, please put your postcode on the list below.

Placeholder: Large Map

OUR NEIGHBOURHOOD PLAN

About Neighbourhood Plans

Neighbourhood Planning was introduced in the 2011 Localism Act.

A Neighbourhood Plan gives communities rights to plan for their local area by:

- Establishing our vision for the next 15+ years.
- Choosing where new homes, shops, offices and businesses are built.
- Allocating green open spaces and recreational areas.
- Influencing what new buildings should look like and what infrastructure should be provided.

What's In It For Tilehurst?

We can make *local* planning policies based on the needs of the community.

It gives real, legal rights to influence planning decisions.

The community benefits from an increase in revenue from the “Community Infrastructure Levy” (CIL).

We can identify and prioritise local projects we want to see funded and implemented.

Opportunities and Constraints

Key Opportunities

Establish our 'vision' for the future & secure more money for local projects

Decide where we want new houses, shops, and industrial areas built

Allocate green open spaces, public spaces and recreational areas

Influence the look of new buildings & promote sustainable development

Key Constraints

We must be in line with local and national planning policies

We can't reduce the number of houses to be built or influence non-land based planning issues

We do not control funding and cannot demand major construction work



How Do We Create The Plan?

The Neighbourhood Plan will be put together by local volunteers, working together with Tilehurst Parish Council.

It **must** be prepared in consultation with the community: make sure you have your say!

The plan will be put to a referendum. If the majority say “Yes” then planning decisions will need to be made in accordance with the Plan.

What Do We Have To Do?



Frequently Asked Questions

- How do we know anyone will take any notice?
 - The law says that planning decisions must be made in accordance with the Neighbourhood Plan
- Why can't we just say we don't want any more houses?
 - The Neighbourhood Plan must conform with West Berkshire's local plan, and the National Planning Framework
- What parts of Tilehurst are included?
 - All of the area inside the border on the map you saw earlier i.e. the parts of Tilehurst covered by Tilehurst Parish Council, in West Berkshire (i.e. not Reading).
- How long will the Plan last?
 - About 15 years
- How long will it take to create?
 - About 18 months

Who Are We?

The Plan Steering Group is made up of volunteers who came to one of our public meetings last year and offered to help.

In addition to the Steering Group we have several other volunteers who help and attend meetings when they can (Nigel and Sue Rowland, Ian Germer, ...)

We would love more volunteers to help. If you would like to help in any way, please leave your contact details before you leave today

Steering Group Members

Chair: Kevin Page*



Joint-vice-chair: Peter Cross, Joan Lawrie

Secretary: Vacant

Members: Jenny Allen, Lynda Chater, Julia Gentle, Rebecca Swainston, Fred Williams

WHAT DO WE KNOW ABOUT TILEHURST?

What did Tilehurst look like?

Below are some photos showing what Tilehurst looked like many years ago.

Photos, both past and present, will play an important part in the Tilehurst Parish Neighbourhood Plan submission.

Look out for our future Photo Competition!

What did Tilehurst look like?



"New Cottages," City Road, Tilehurst, Reading, c. 1935



The bucket conveyor of S. and E. Collier, brick, tile and pottery manufacturers, which carried clay over Norcot Road, Tilehurst, Reading, c. 1940



Blagrove Hospital, Langley Hill, Tilehurst, Reading, from the south, c. 1935. The buildings have verandahs' with patients in beds under them.



Chapel Hill, Tilehurst, Reading, looking north-westwards, c. 1935.



Calcot Park Golf Club House, c. 1935.



Calcot Park, Bath Road, Tilehurst, c. 1845.

History of Tilehurst

The history of Tilehurst will play an important role in defining the future of the parish so we will be asking you to let us know about the defining moments in it's history.

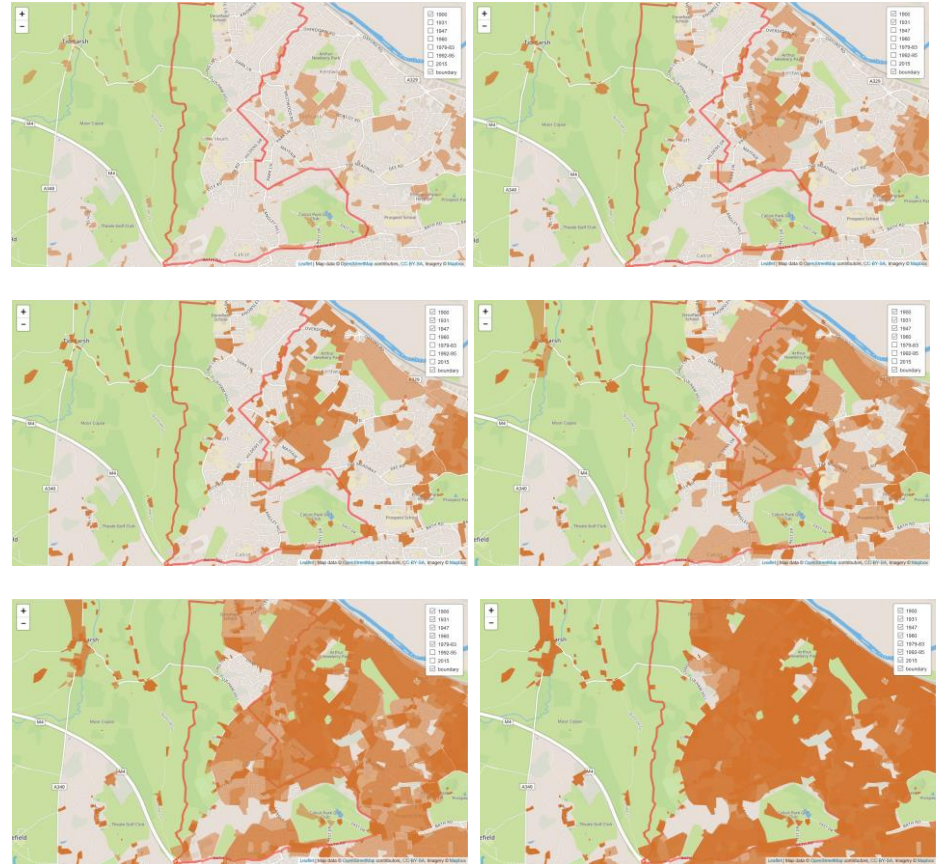
Of particular interest is information about how Tilehurst has changed over the years, both positively and negatively.

For example, below are maps showing the increase in the number of houses and, conversely, the decline in open spaces.

History of Tilehurst



Aerial photo of Tilehurst (1964)



Maps showing development of Tilehurst from 1900-2015

Who Lives Here Today?

An essential part of any Neighbourhood Plan submission is the provision of demographic data about Tilehurst.

- Who lives in the parish today?
- Who will be living here tomorrow?
- What will they be living in?
- Where will children be going to school?
- How will they get there?
- Etc.

See below for examples of how this data will be presented in the submission.

**TELL US WHAT
YOU THINK**

What Do You Think About Tilehurst?

Please use the sticky labels to add your views.

Write each idea on a separate sticky note, then stick it in the relevant section of the notice board.

Now

Thinking about living in Tilehurst today, what do you like and dislike?

The Future

Thinking about the future development of Tilehurst what are your hopes and fears?

Imagine Tilehurst in 15 years' time...

**WANT TO KNOW
MORE?**

Please feel free to join us for cup of tea or coffee

...and complete the attendance form and, if you wish, have a chat with one of our volunteers.

Want to help?

Please let us know on the form, or give your details to one of the volunteers. We'll be in touch.

What Happens Next?

The conversation will continue:

- <http://tilehurstpcnp.org.uk/>
- steering-group@tilehurstpcnp.org.uk
- Facebook (In progress)
- Twitter (@TilehurstNDP)

A Vision for the Parish will be created, based on your ideas and views.



(QR for email updates)

Stage 2: Options

We will continue to consult with residents, businesses and landowners, and we will produce **realistic options** for development.

We'll present these options at another series of events like this and **ask you to choose** which ones you prefer.

THANK YOU FOR COMING!

Your ideas and views will make a difference. They will form the basis of the policies that we develop on your behalf.